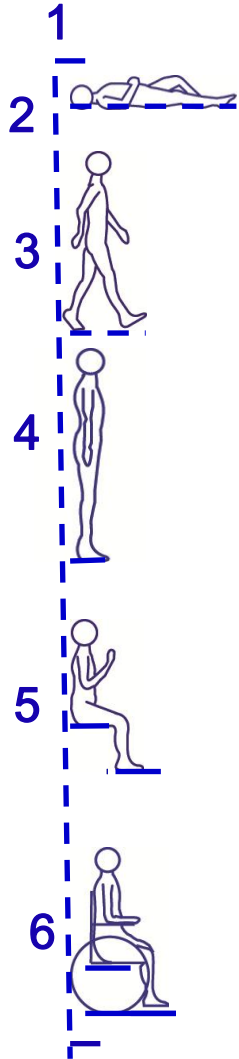


Body positions

1-human space, 2-full rest, 3-walking, 4-standing, 5-sitting, 6-sitting in wheelchair



The reason for vertical order of human body graphics:

They are in the order of time a human spends in lift time. Everyone in infancy spends much time lying, and then starts standing and walking. Grown-ups spend much time seated for many activities. Some elderly people need wheel-chairs.

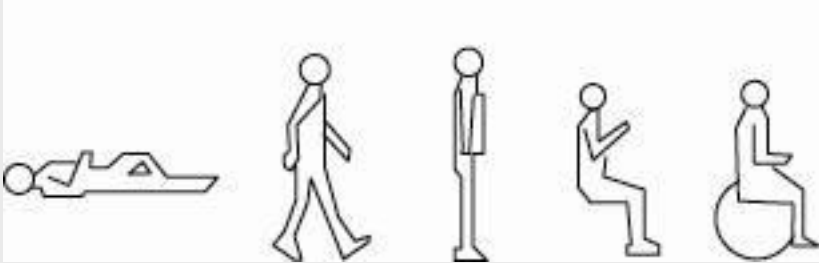
So long as human beings live on the earth, the gravity is the primary factor which controls our body movements and conditions. It is also a reason why graphics are represented in the vertical axis.

Significance of body positions in this website:

This website addresses problems related to health care and makes proposals for licensed health care personnel/workers. Full understanding of what are natural human positions/conditions is essential to specify settings which best suit purposeful acts of human beings including health care. (See menu 13)

2 Basic Human positions for pd patient care

The 2 Best Positions are-
Balanced Upright
Full Rest-Horizontal



**Balanced upright –seated
for precise treatment**



Balanced upright patient relations

**Standing–Standing
for self care exercises**

**Standing-Seated
for brief exams, x-rays and prosthetic options**

**Seated-Seated
for consulting**

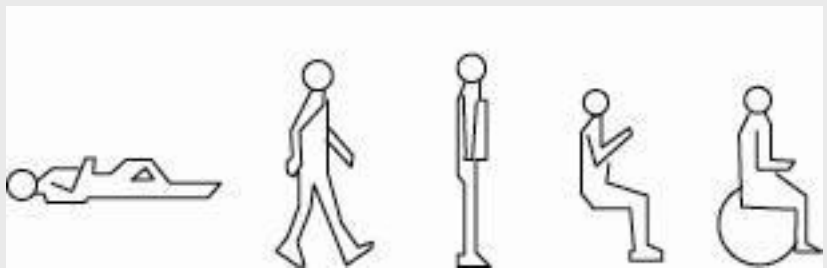


**Face-to-face or side-by-side
with feet on the floor**

Can all patients be treated in the best position?

No. Some disabled dental patients 0.02% can't:

- 1. position themselves to or from best positions
- 2. accept the best position



Japan has the most aged population in the world. In general practice clinics there about 0.02% of patients cannot be treated in the best position head support. Dentists in best position clinics find a way with these rare special problems. Best position patients can be treated by disabled dentists!



This disabled dentist can treat patients easily in the best position.

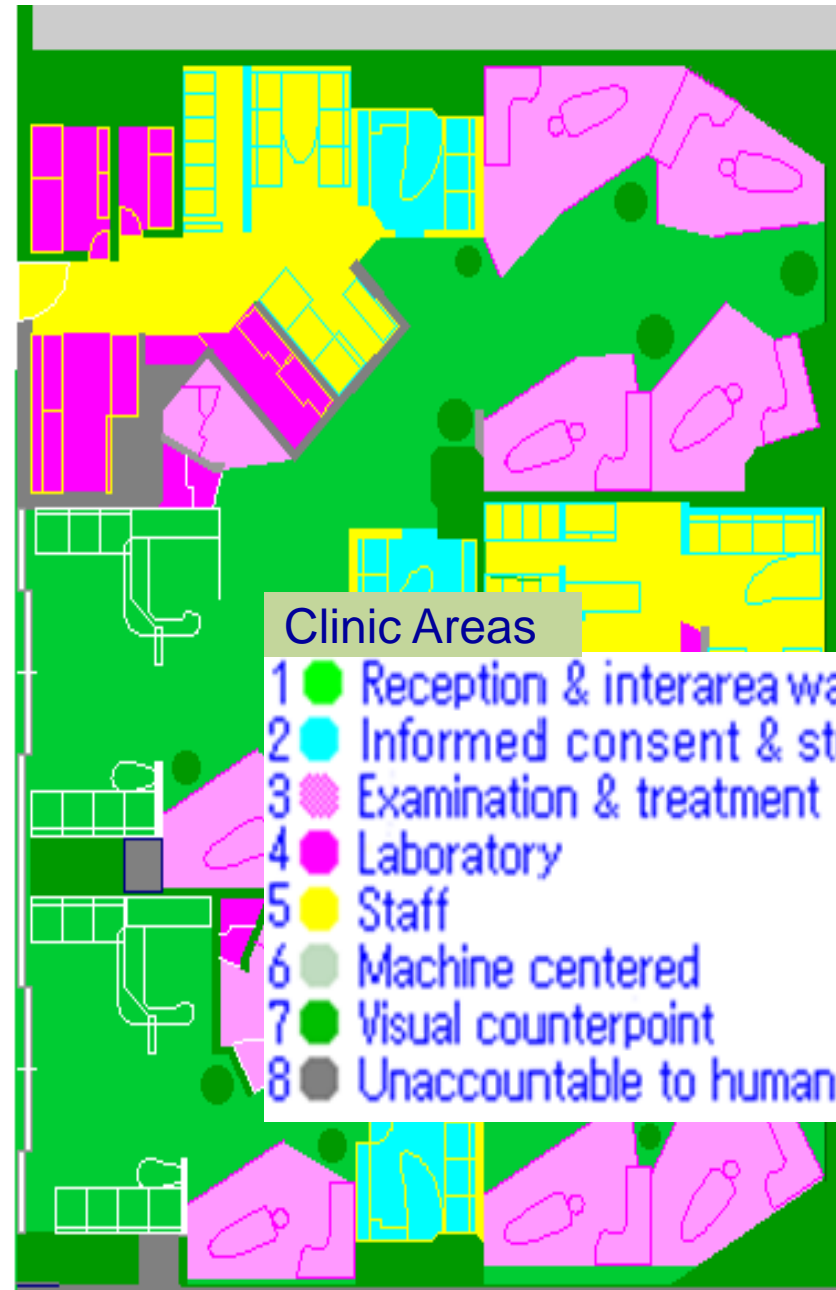
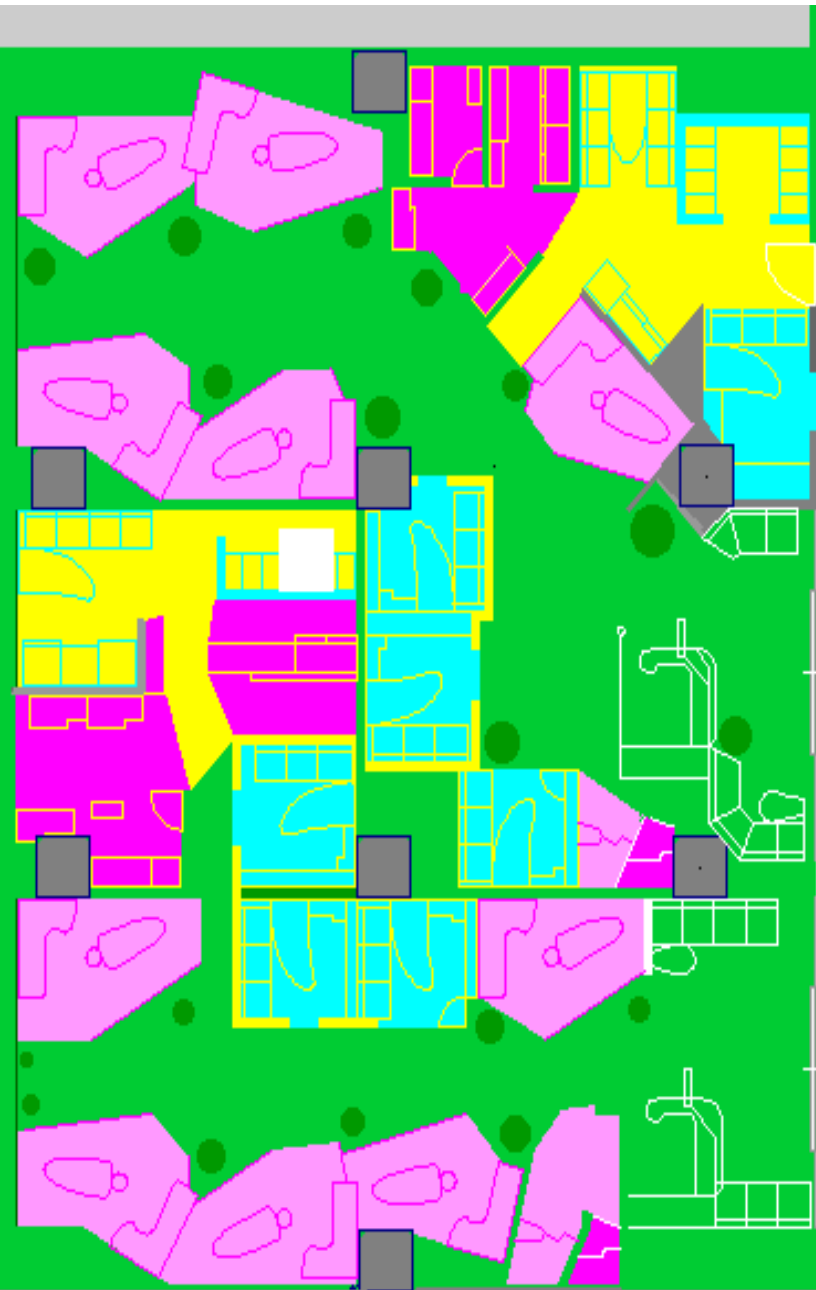


This patient can not tolerate any inclination, and is seated on the operator's seat.



This patient just had back surgery but can lay on her side...same for late pregnancy

Example of a human centered (pd) setting in Atami, Japan(601.5m2)



- Clinic Areas
- 1 ● Reception & interarea walkways
 - 2 ● Informed consent & study
 - 3 ● Examination & treatment
 - 4 ● Laboratory
 - 5 ● Staff
 - 6 ● Machine centered
 - 7 ● Visual counterpoint
 - 8 ● Unaccountable to human space