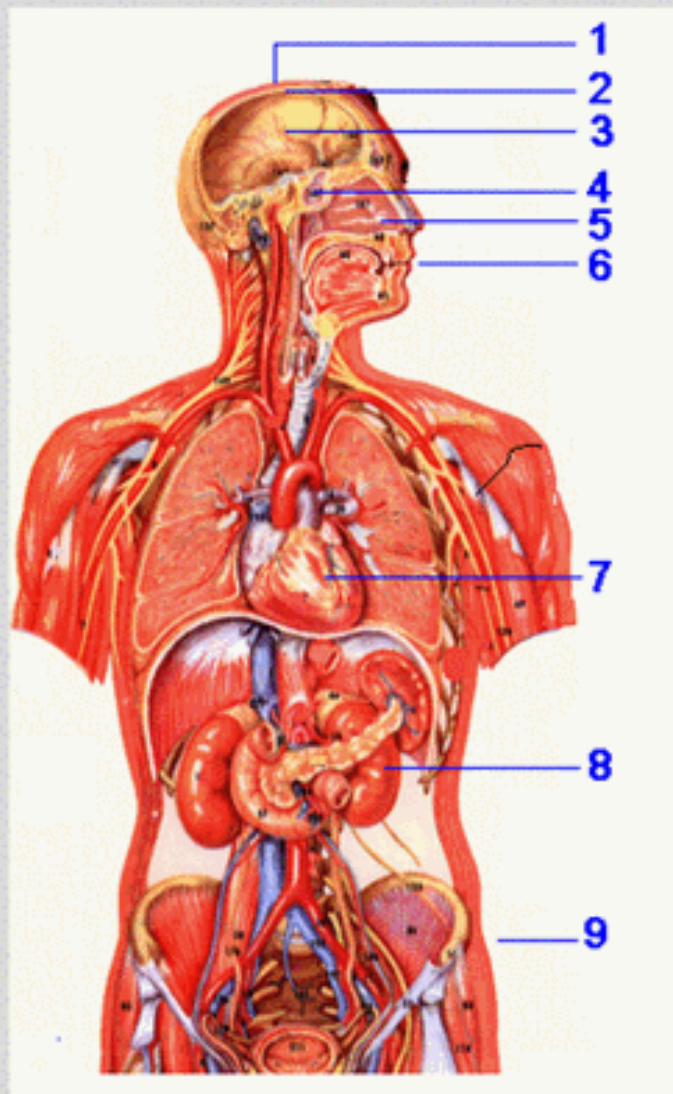


Terms for body systems



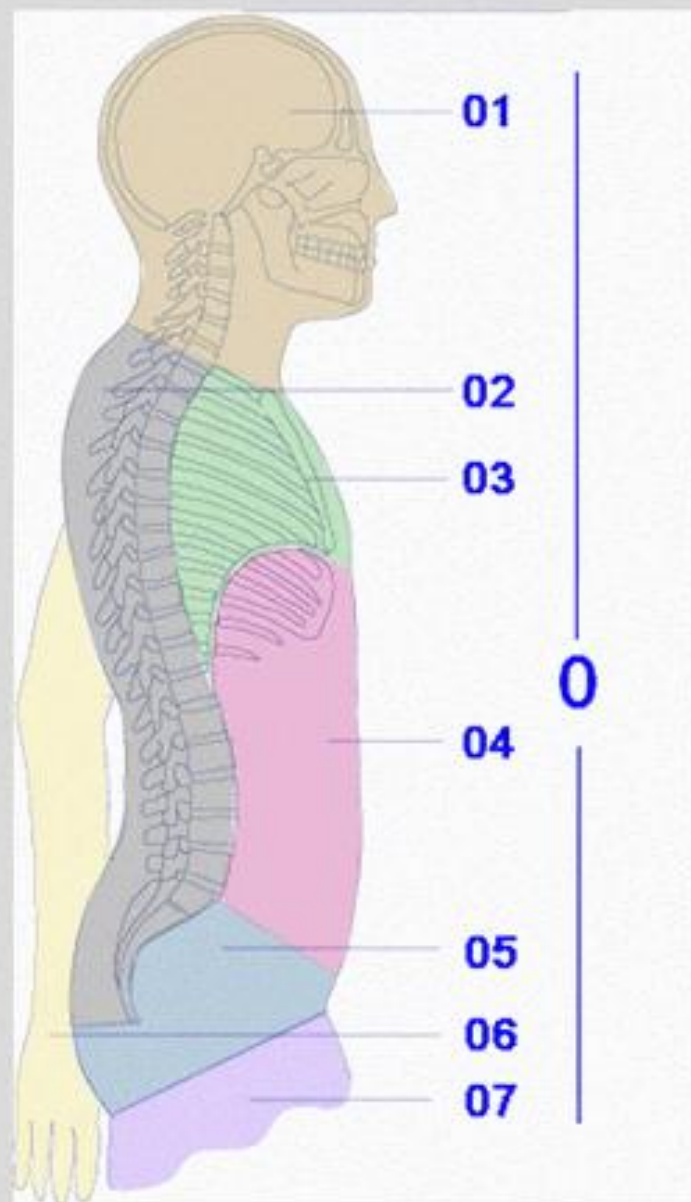
Global terms

Japanese terms

English terms

1	皮膚系	integumentary system
2	筋骨格系	musculoskeletal system
3	神経系	nervous system
4	内分泌系	endocrine system
5	呼吸器系	respiratory system
6	消化器系	digestive system
7	循環器系	circulatory system
8	生殖泌尿器系	genitourinary system
9	胎児系	embryonic system

Terms for body and body regions

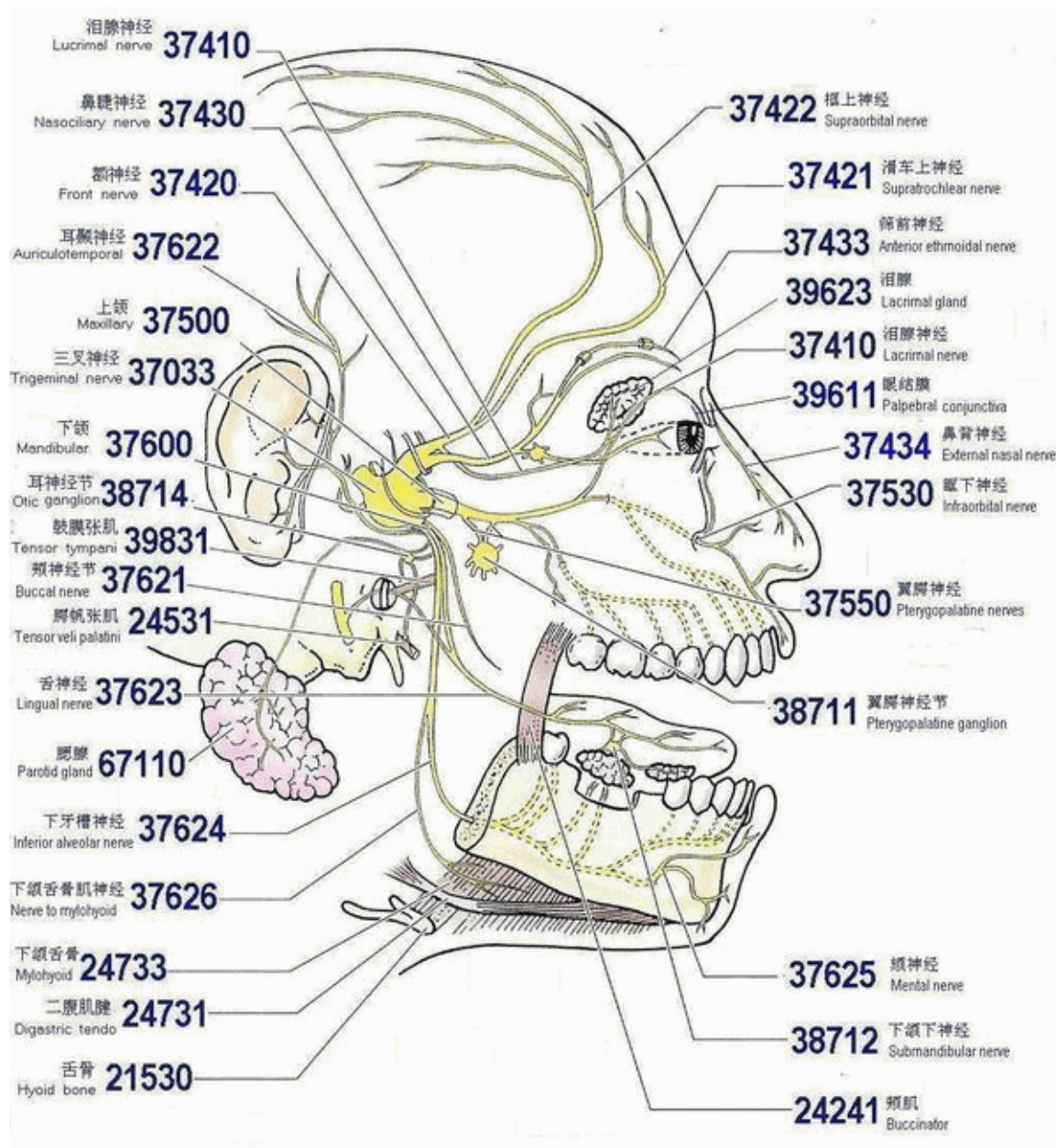


Global terms

Japanese terms

English terms

00	人体	human body
01	頭頸部	head & neck
02	背部	back
03	胸郭部	thorax
04	腹部	abdomen
05	骨盤鼠蹊部	pelvic-inguinal
06	上肢	upper limbs
07	下肢	lower limbs



泪腺神经
Lacrimal nerve 37410

鼻睫神经
Nasociliary nerve 37430

额神经
Front nerve 37420

耳颞神经
Auriculotemporal 37622

上颌
Maxillary 37500

三叉神经
Trigeminal nerve 37033

下颌
Mandibular 37600

耳神经节
Otic ganglion 38714

鼓膜张肌
Tensor tympani 39831

颊神经节
Buccal nerve 37621

腭帆张肌
Tensor veli palatini 24531

舌神经
Lingual nerve 37623

腮腺
Parotid gland 67110

下牙槽神经
Inferior alveolar nerve 37624

下颌舌骨肌神经
Nerve to mylohyoid 37626

下颌舌骨
Mylohyoid 24733

二腹肌腱
Digastric tendo 24731

舌骨
Hyoid bone 21530

37422 眶上神经
Supraorbital nerve

37421 滑车上神经
Supratrochlear nerve

37433 筛前神经
Anterior ethmoidal nerve

39623 泪腺
Lacrimal gland

37410 泪腺神经
Lacrimal nerve

39611 眼结膜
Palpebral conjunctiva

37434 鼻背神经
External nasal nerve

37530 眶下神经
Infraorbital nerve

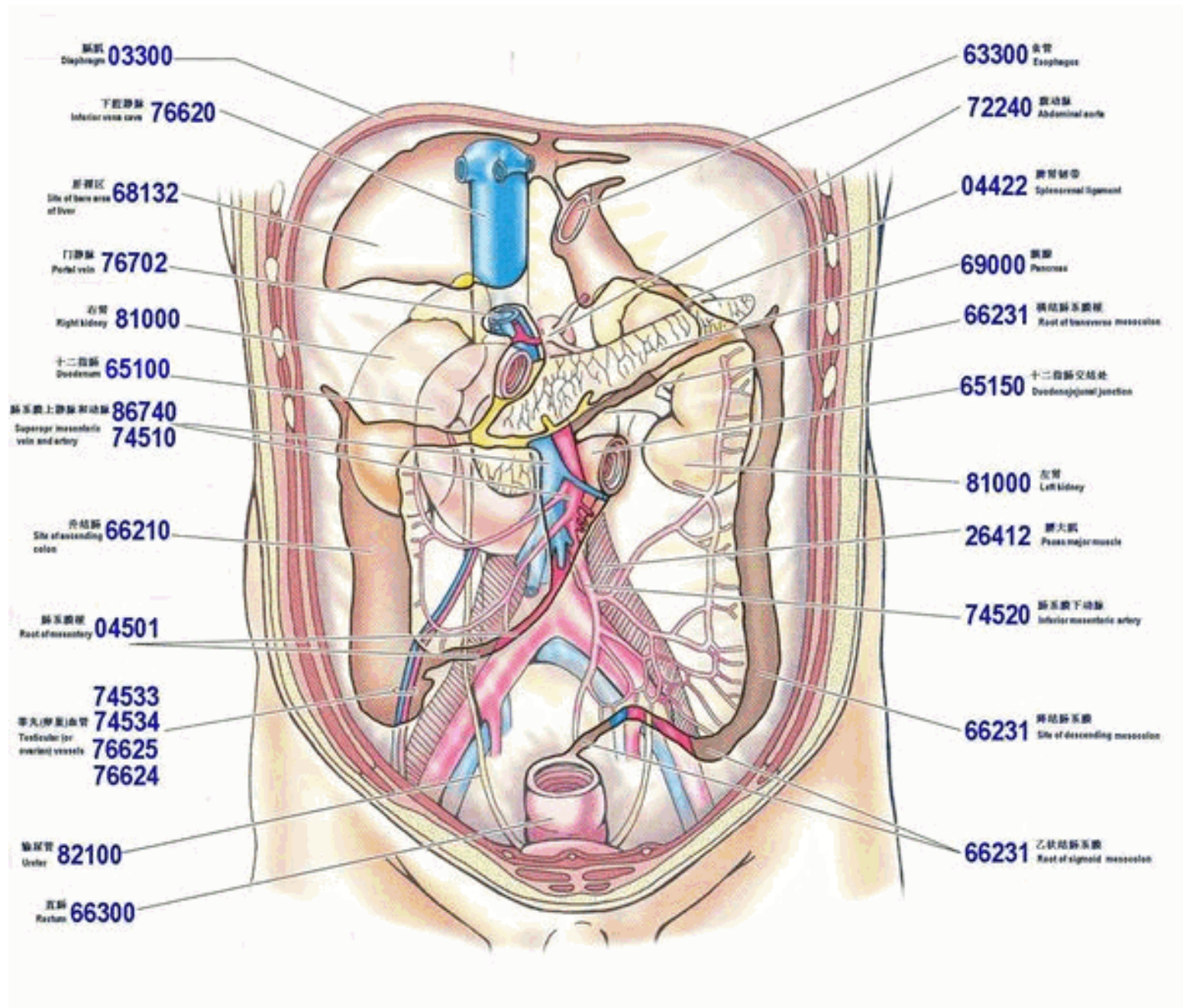
37550 翼腭神经
Pterygopalatine nerves

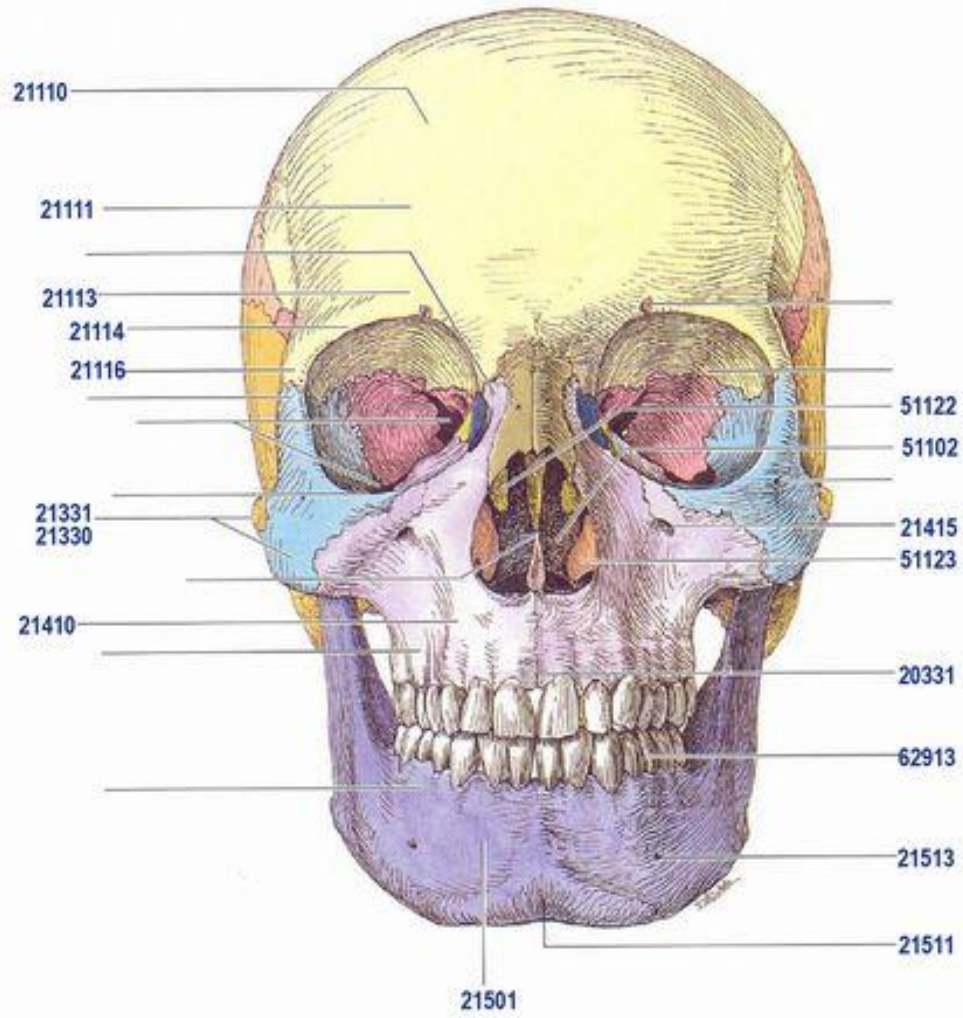
38711 翼腭神经节
Pterygopalatine ganglion

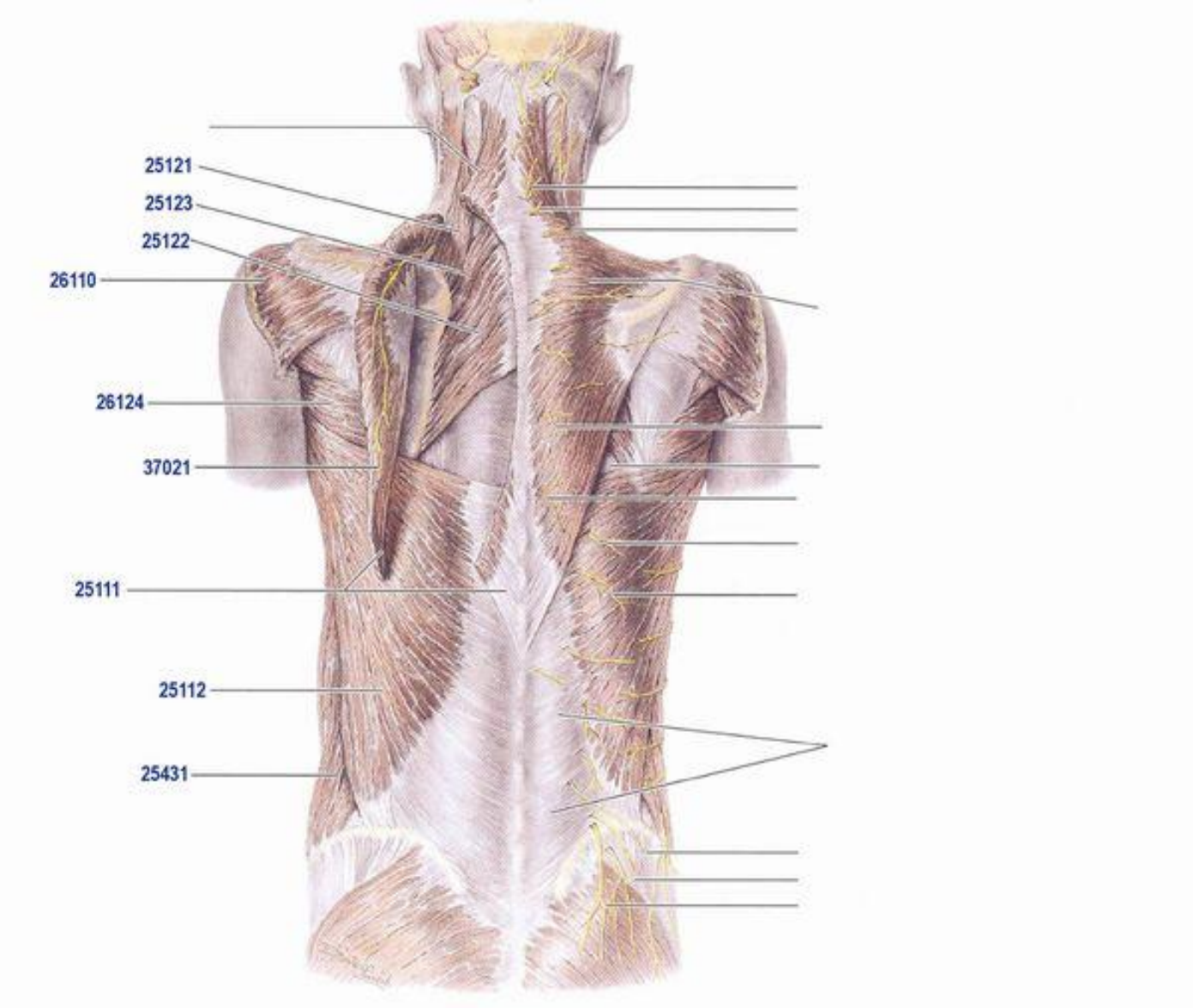
37625 颊神经
Mental nerve

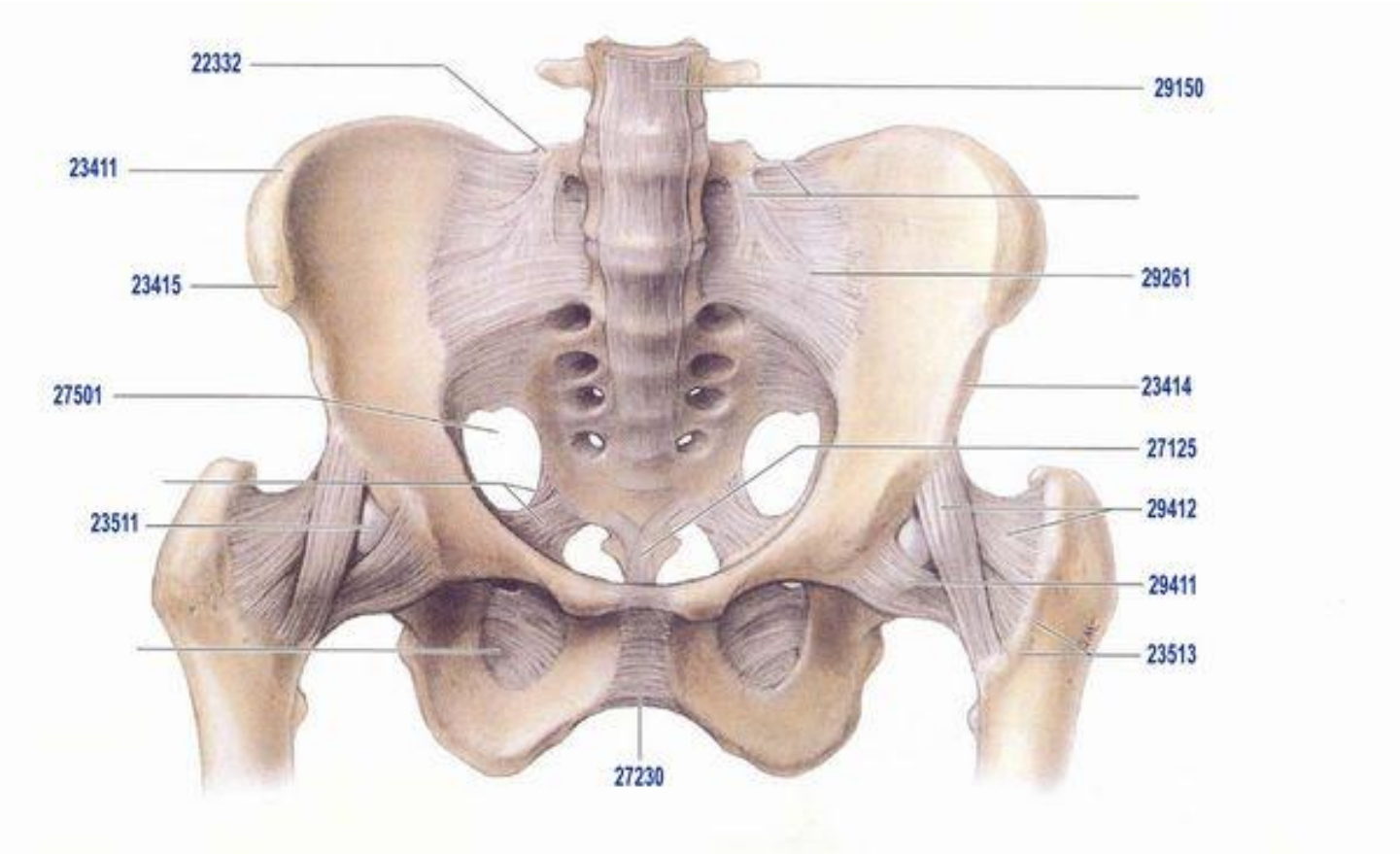
38712 下颌下神经
Submandibular nerve

24241 颊肌
Buccinator









22332

29150

23411

23415

29261

27501

23414

27125

23511

29412

29411

23513

27230

